

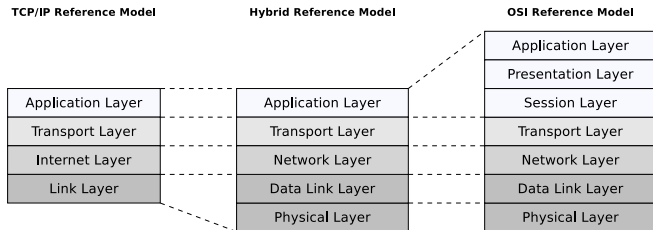
# Network Components

Prof. Dr. Christian Baun

Frankfurt University of Applied Sciences  
(1971–2014: Fachhochschule Frankfurt am Main)  
Fachbereich Informatik und Ingenieurwissenschaften  
[christianbaun@fb2.fra-uas.de](mailto:christianbaun@fb2.fra-uas.de)

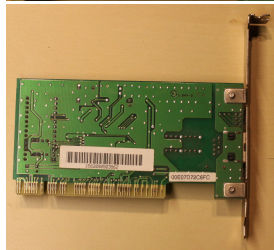
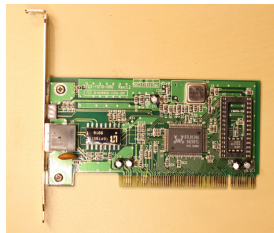
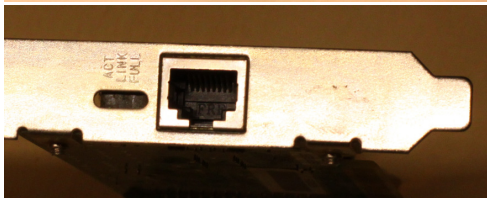
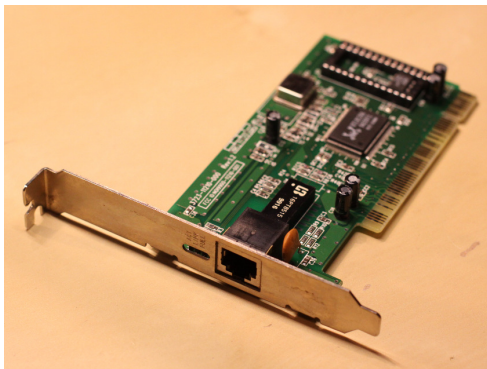
# Task

- The slides of this slide set contain photos of various network components
- Try to assign the network components to the layers in the hybrid reference model

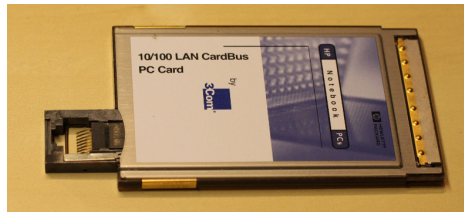
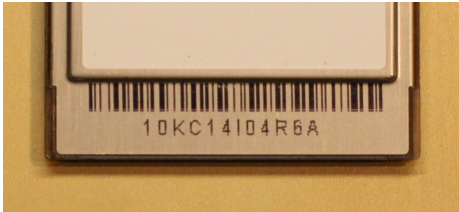




# Component 1

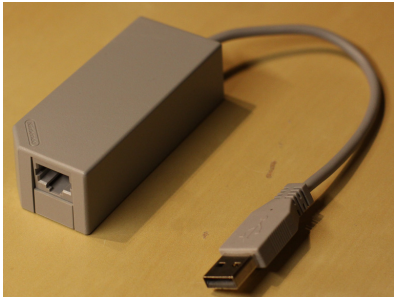
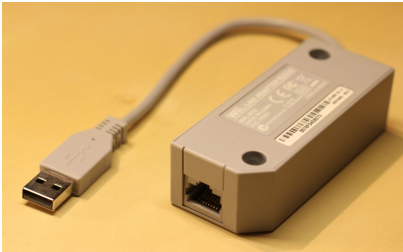


# Component 2





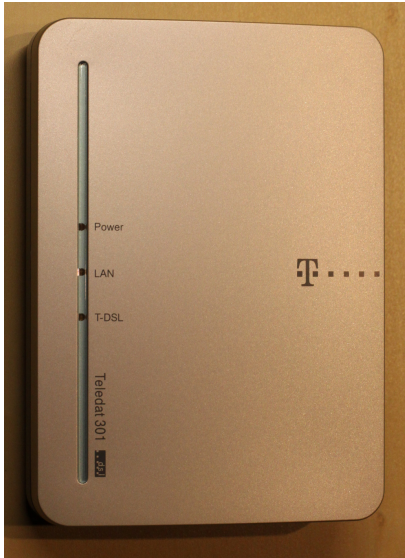
# Component 3



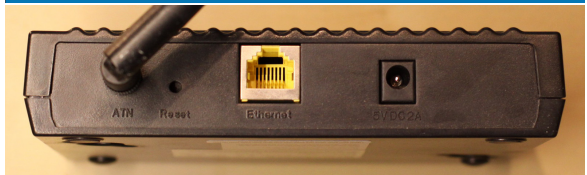
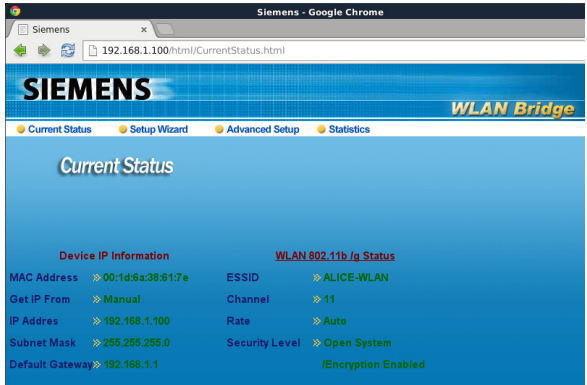
# Component 4



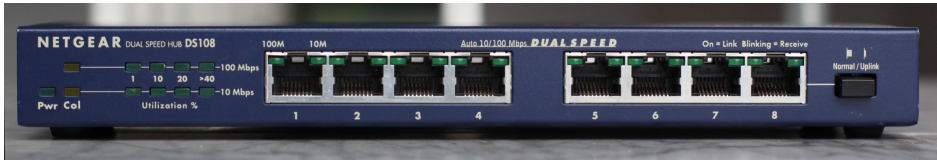
# Component 5



# Component 6



# Component 7



# Component 8





## Component 9

```
# telnet 10.0.0.5
Trying 10.0.0.5...
Connected to 10.0.0.5
Escape character is '^]'.

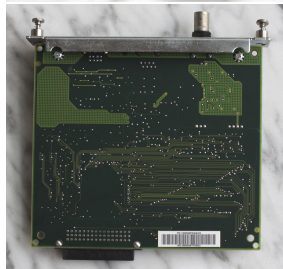
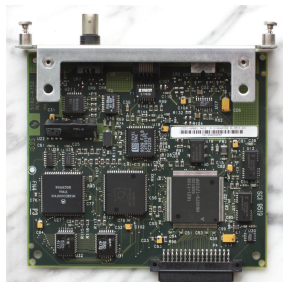
```

HP JetDirect

Please type "?" for HELP, or "/" for current settings

```
> /
===JetDirect Telnet Configuration===
Firmware Rev.   : A.08.49
MAC Address     : 08:00:09:7f:56:63
Config By      : USER SPECIFIED
IP Address     : 10.0.0.5
Subnet Mask    : 255.255.255.0
Default Gateway : 10.0.0.1
Syslog Server   : Not Specified
Idle Timeout   : 90 Seconds
Set Cmnty Name : Not Specified
Host Name      : LASERJET
DHCP Config    : Disabled

```

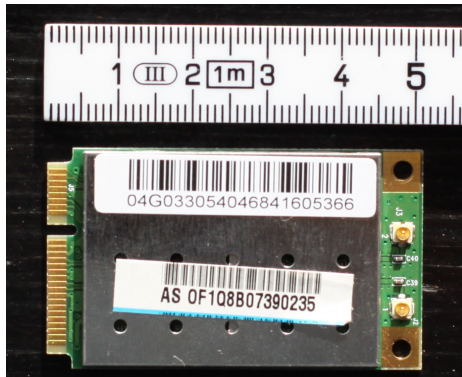


# Component 10





# Component 11



0022435567E7

## Component 12

```
$ telnet 192.0.0.192
Trying 192.0.0.192...
Connected to 192.0.0.192.
Escape character is '^]'.
```

HP JetDirect

```
Please type "?" for HELP, or "/" for current settings
> /
```

===JetDirect Telnet Configuration===

```
Firmware Rev.      : F.08.20
MAC Address        : 00:30:6e:fc:97:c8
Config By         : Default IP
```

```
IP Address         : 192.0.0.192
Subnet Mask       : Not Specified
Default Gateway   : 192.0.0.192
Syslog Server     : Not Specified
Idle Timeout      : 90 Seconds
Set Cmnty Name    : Not Specified
Host Name         : Not Specified
```

```
DHCP Config       : Enabled
Passwd            : Disabled
IPX/SPX           : Enabled
DLC/LLC           : Enabled
Banner page       : Enabled
```

S/N:SG421BB4AA  
AD:00306EFC97C8



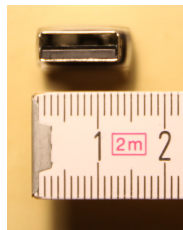
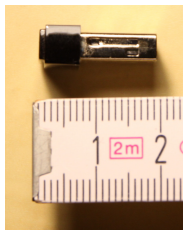
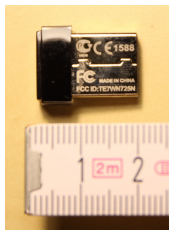
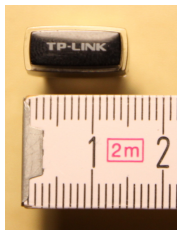
# Component 13



# Component 14

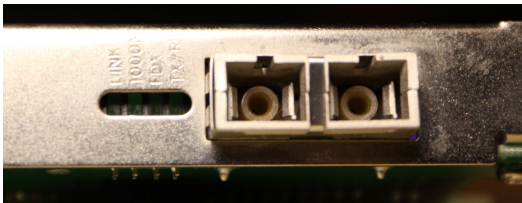
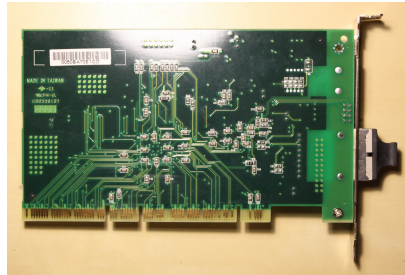
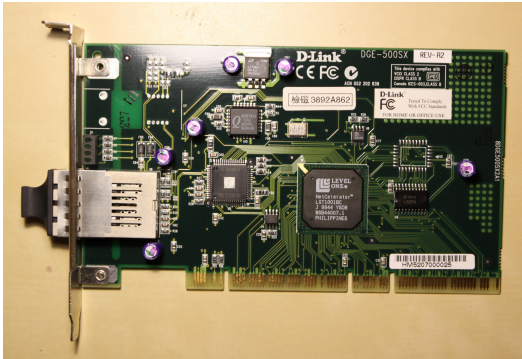


## Component 15



```
[221411.207865] usb 1-2: USB disconnect, device number 90
[221703.999606] usb 1-1: USB disconnect, device number 91
[221732.387524] usb 1-1: new high-speed USB device number 92 using xhci_hcd
[221732.528114] usb 1-1: New USB device found, idVendor=0bda, idProduct=8179
[221732.528118] usb 1-1: New USB device strings: Mfr=1, Product=2, SerialNumber=3
[221732.528121] usb 1-1: Product: 802.11n NIC
[221732.528123] usb 1-1: Manufacturer: Realtek
[221732.528126] usb 1-1: SerialNumber: 00E04C0001
[221733.120663] r8188eu: module is from the staging directory, the quality is unknown, you have been warned.
[221733.124373] Chip Version Info: CHIP_8188E_Normal_Chip_TSMC_A_CUT_1T1R_RomVer(0)
[221733.150775] usbcore: registered new interface driver r8188eu
[221733.152618] r8188eu 1-1:1.0 wlx6466b31c4fbc: renamed from wlan0
[221733.177891] IPv6: ADDRCONF(NETDEV_UP): wlx6466b31c4fbc: link is not ready
[221733.178917] r8188eu 1-1:1.0: firmware: direct-loading firmware rtlwifi/rtl8188eufw.bin
[221733.544034] MAC Address = 64:66:b3:1c:4f:bc
```

# Component 16

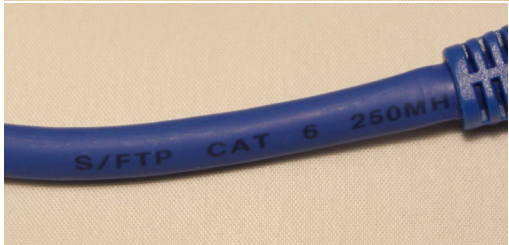
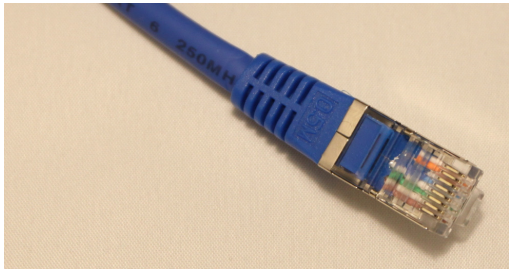
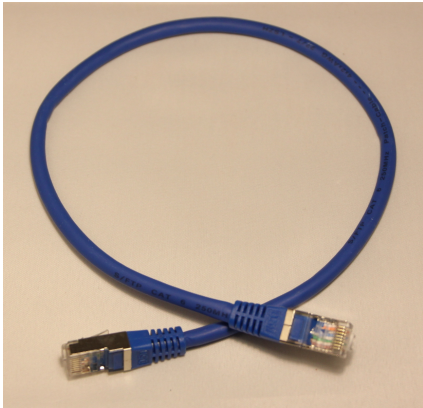


# Component 17





# Component 18

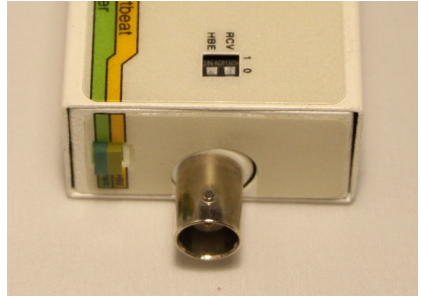
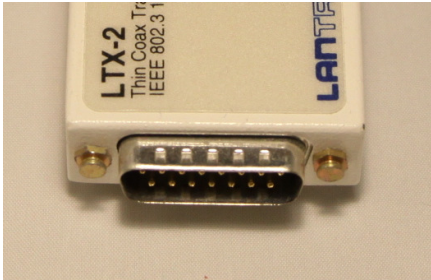




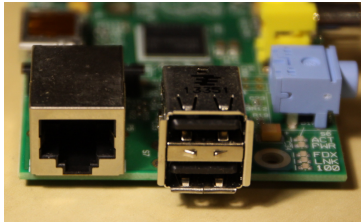
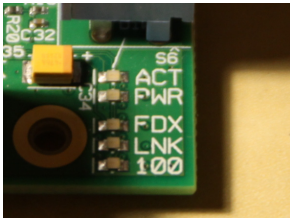
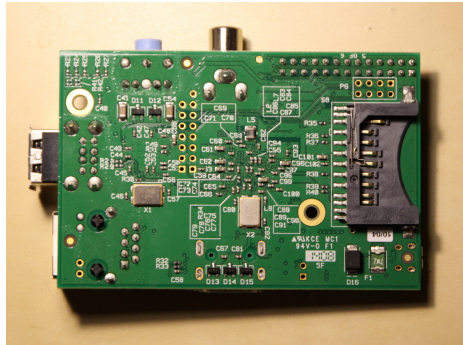
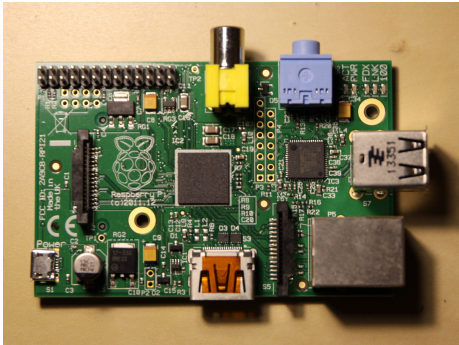
# Component 19



# Component 20



# Component 21



# Component 22



- Components of dry air:
  - Nitrogen ( $N_2$ )
  - Oxygen ( $O_2$ )
  - Argon (Ar)
  - Carbon dioxide ( $CO_2$ )
  - Neon (Ne)
  - Helium (He)
  - Methane ( $CH_4$ )
  - Krypton (Kr)
  - Hydrogen ( $H_2$ )
  - ...