

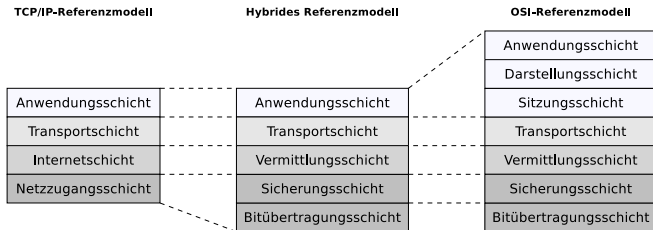
Netzwerkcomponenten

Prof. Dr. Christian Baun

Frankfurt University of Applied Sciences
(1971–2014: Fachhochschule Frankfurt am Main)
Fachbereich Informatik und Ingenieurwissenschaften
christianbaun@fb2.fra-uas.de

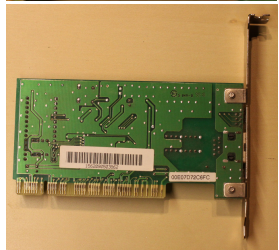
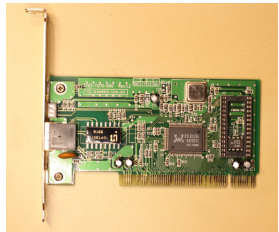
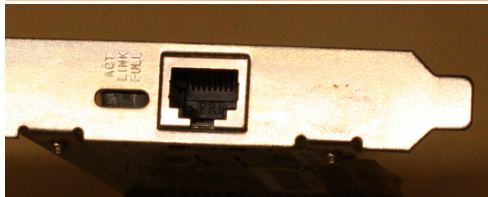
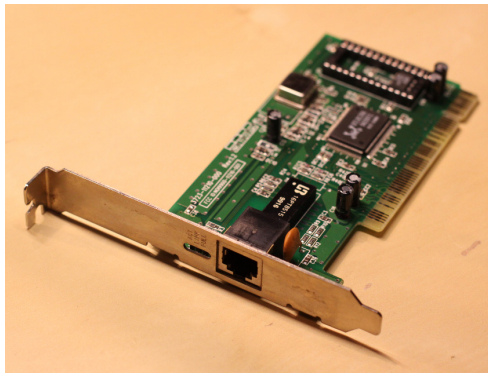
Aufgabe

- Auf den Folien dieses Foliensatzes befinden sich Abbildungen zu verschiedenen Netzwerkkomponenten
- Versuchen Sie die Netzwerkkomponenten den Schichten im hybriden Referenzmodell zuzuordnen

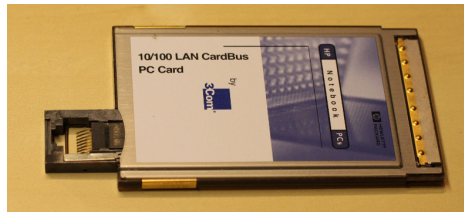
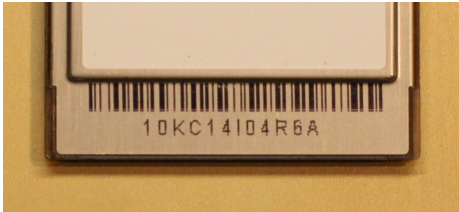




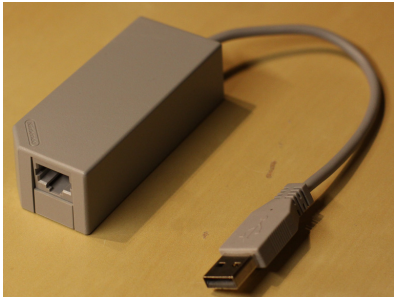
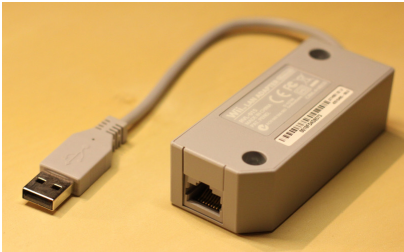
Komponente 1



Komponente 2



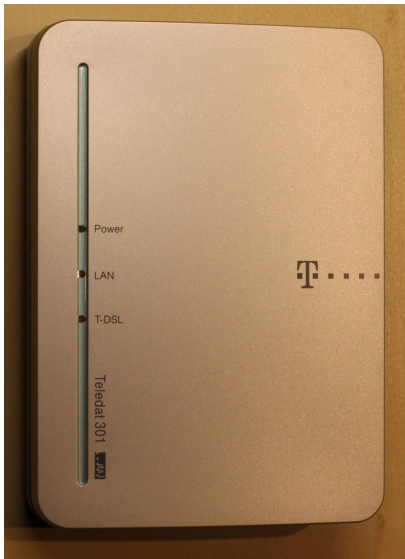
Komponente 3



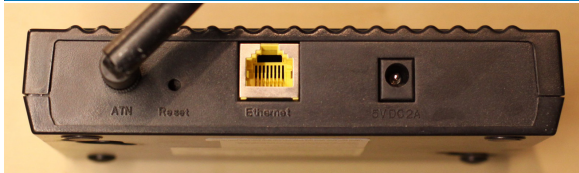
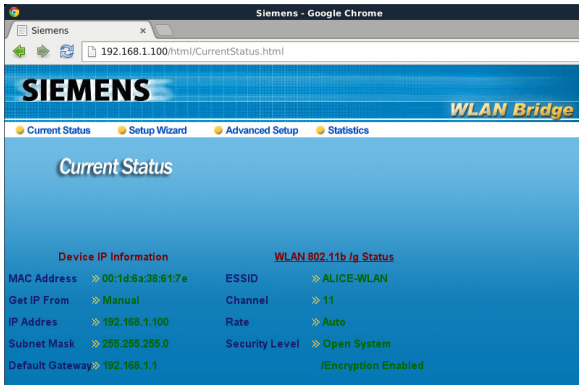
Komponente 4



Komponente 5



Komponente 6



Komponente 7



Komponente 8



Komponente 9



```
# telnet 10.0.0.5
Trying 10.0.0.5...
Connected to 10.0.0.5
Escape character is '^]'.

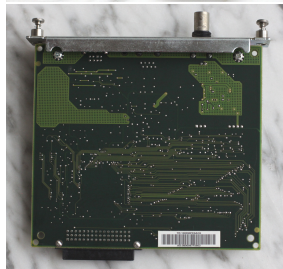
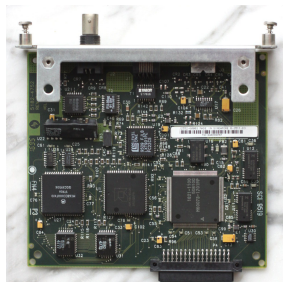
```

HP JetDirect

Please type "?" for HELP, or "/" for current settings

```
> /
===JetDirect Telnet Configuration===
Firmware Rev.   : A.08.49
MAC Address     : 08:00:09:7f:56:63
Config By      : USER SPECIFIED
IP Address     : 10.0.0.5
Subnet Mask    : 255.255.255.0
Default Gateway: 10.0.0.1
Syslog Server  : Not Specified
Idle Timeout   : 90 Seconds
Set Cmnty Name : Not Specified
Host Name     : LASERJET
DHCP Config   : Disabled

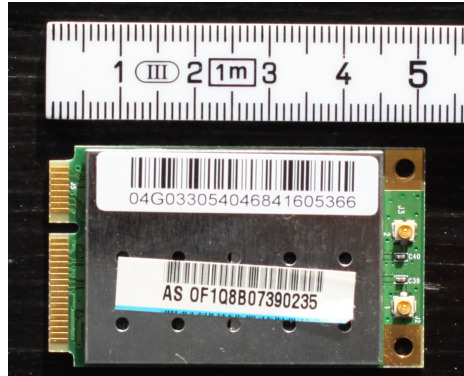
```



Komponente 10



Komponente 11



0022435567E7

Komponente 12

```
$ telnet 192.0.0.192
Trying 192.0.0.192...
Connected to 192.0.0.192.
Escape character is '^]'.
```

HP JetDirect

```
Please type "?" for HELP, or "/" for current settings
> /
```

```
===JetDirect Telnet Configuration===
```

```
Firmware Rev.      : F.08.20
MAC Address       : 00:30:6e:fc:97:c8
Config By        : Default IP
```

```
IP Address        : 192.0.0.192
Subnet Mask      : Not Specified
Default Gateway  : 192.0.0.192
Syslog Server    : Not Specified
Idle Timeout     : 90 Seconds
Set Cmnty Name   : Not Specified
Host Name       : Not Specified
```

```
DHCP Config      : Enabled
Passwd          : Disabled
IPX/SPX         : Enabled
DLC/LLC         : Enabled
Banner page     : Enabled
```

```
S/N:SG421BB4AA
AD:00306EFC97C8
```



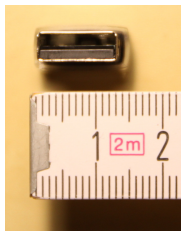
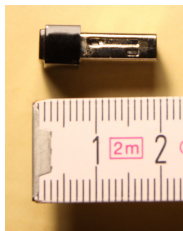
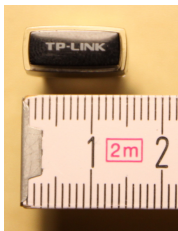
Komponente 13



Komponente 14

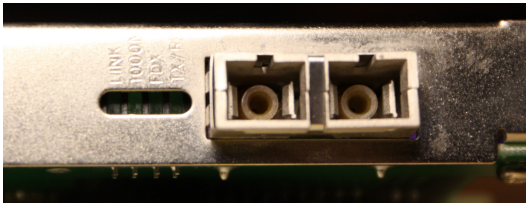
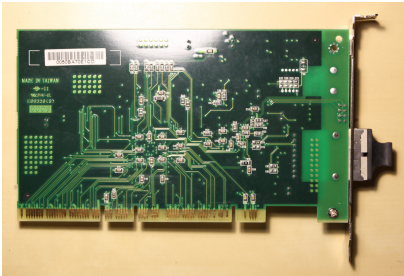
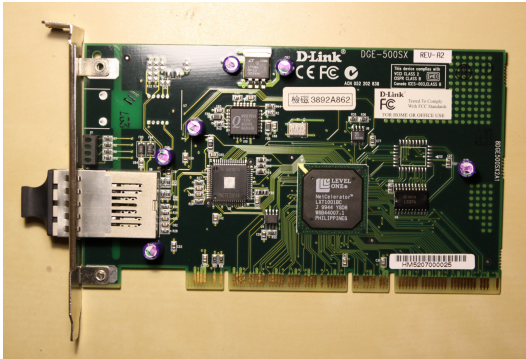


Komponente 15



```
[221411.207865] usb 1-2: USB disconnect, device number 90
[221703.999606] usb 1-1: USB disconnect, device number 91
[221732.387524] usb 1-1: new high-speed USB device number 92 using xhci_hcd
[221732.528114] usb 1-1: New USB device found, idVendor=0bda, idProduct=8179
[221732.528118] usb 1-1: New USB device strings: Mfr=1, Product=2, SerialNumber=3
[221732.528121] usb 1-1: Product: 802.11n NIC
[221732.528123] usb 1-1: Manufacturer: Realtek
[221732.528126] usb 1-1: SerialNumber: 00E04C0001
[221733.120663] r8188eu: module is from the staging directory, the quality is unknown, you have been warned.
[221733.124373] Chip Version Info: CHIP_8188E_Normal_Chip_TSMC_A_CUT_1T1R_RomVer(0)
[221733.150775] usbcore: registered new interface driver r8188eu
[221733.152618] r8188eu 1-1:1.0 wlx6466b31c4fbc: renamed from wlan0
[221733.177891] IPv6: ADDRCONF(NETDEV_UP): wlx6466b31c4fbc: link is not ready
[221733.178917] r8188eu 1-1:1.0: firmware: direct-loading firmware rtlwifi/rtl8188eufw.bin
[221733.544034] MAC Address = 64:66:b3:1c:4f:bc
```

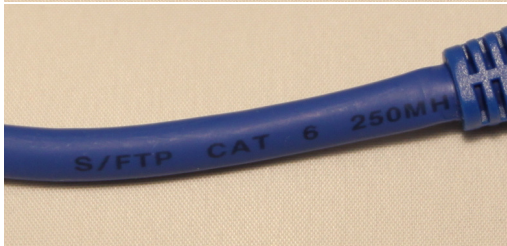
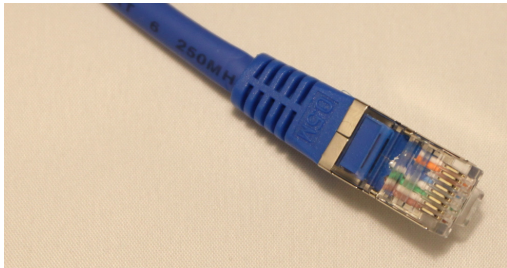
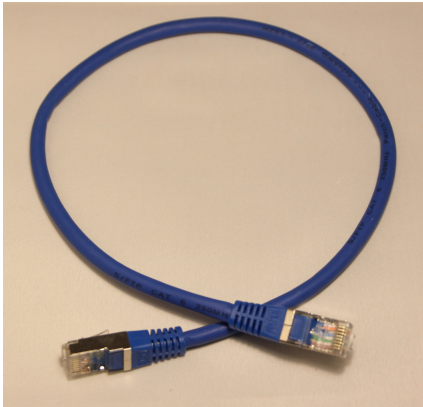
Komponente 16



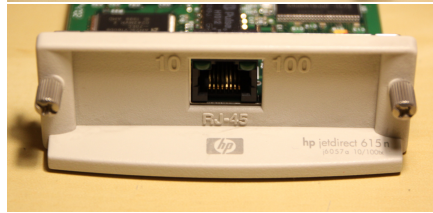
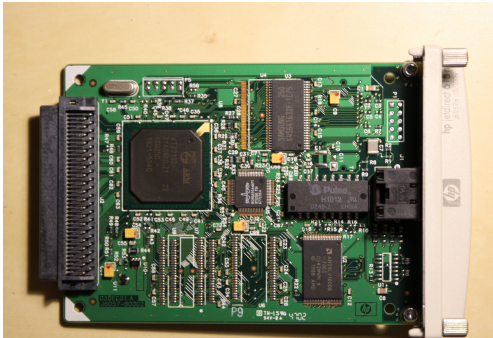
Komponente 17



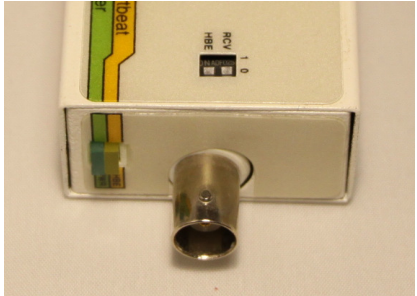
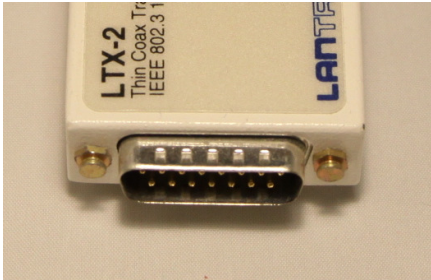
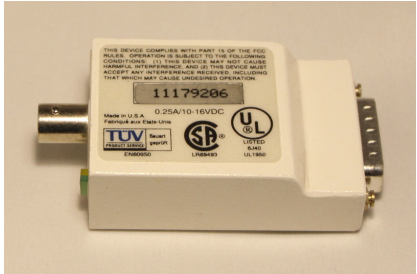
Komponente 18



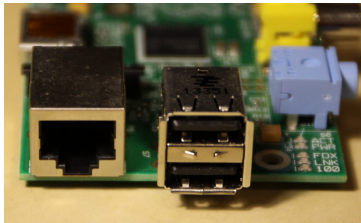
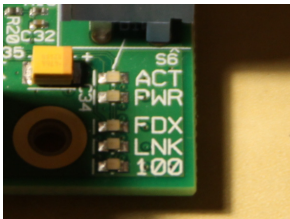
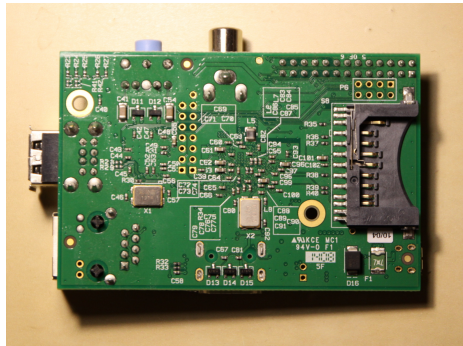
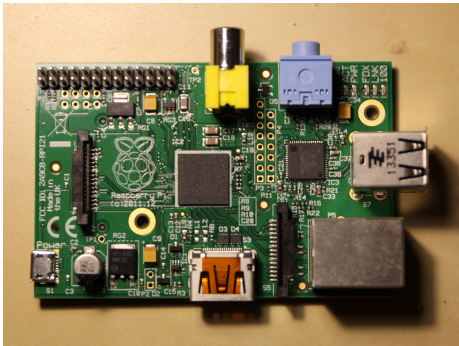
Komponente 19



Komponente 20



Komponente 21



Komponente 22



- Bestandteile trockener Luft:
 - Stickstoff (N_2)
 - Sauerstoff (O_2)
 - Argon (Ar)
 - Kohlenstoffdioxid (CO_2)
 - Neon (Ne)
 - Helium (He)
 - Methan (CH_4)
 - Krypton (Kr)
 - Wasserstoff (H_2)
 - usw.